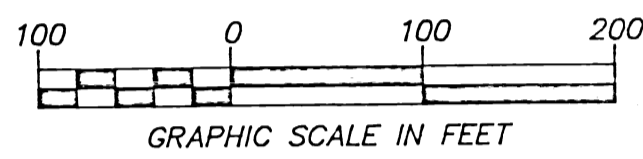


BEARINGS BASED ON THE NORTH LINE OF THE NW1/4 OF THE NW1/4 SECTION 36 T6N-R18W AS BEING CARDINAL EAST/WEST



BOUNDARY DESCRIPTION:

APPROXIMATELY 15.10 ACRES IN THE NW1/4 OF THE NW1/4 AND APPROXIMATELY 15.27 ACRES IN THE SW1/4 OF THE NW1/4 ALL IN SECTION 36, T6N-R18W OF THE 5th PRINCIPAL MERIDIAN, CONWAY COUNTY, ARKANSAS, BEING MORE PARTICULARLY DESCRIBED AS FOLLOWS:

COMMENCING AT A FOUND 2-1/2 INCH ALUMINUM PIPE FOR THE NW CORNER OF SAID NW1/4 NW1/4; THENCE DUE EAST ALONG THE NORTH LINE OF SAID NW1/4 NW1/4, 659.17 FEET TO THE POINT OF BEGINNING; THENCE CONTINUE DUE EAST ALONG SAID NORTH LINE, 495.53 FEET; THENCE S00°14'33"E, 978.36 FEET TO A FOUND 1/2 INCH REBAR; THENCE N89°45'27"E, 26.79 FEET TO A FOUND 1/2 INCH REBAR; THENCE S00°14'33"E, 188.38 FEET TO A POINT ON THE SOUTH BROW OF PETIT JEAN MOUNTAIN; THENCE S61°57'48"W, ALONG THE SOUTH BROW OF PETIT JEAN MOUNTAIN, 30.28 FEET; THENCE S00°14'33"E, 1458.85 FEET TO A POINT IN THE SOUTH LINE OF SAID SW1/4 NW1/4; THENCE S89°52'55"W ALONG THE SOUTH LINE OF SAID SW1/4 NW1/4, 495.00 FEET TO A FOUND 1/2 INCH REBAR; THENCE N00°35'21"W, 1321.31 FEET TO A FOUND 1/2 INCH REBAR; THENCE N00°04'55"E, 1319.48 FEET TO THE POINT OF BEGINNING.

THE ABOVE DESCRIBED TRACT BEING SURVEYED BY TERRY W. CLEAVER, PLS 1336, WITH A PLAT OF SAID SURVEY FILED IN THE CIRCUIT CLERK'S OFFICE, CONWAY COUNTY, ARKANSAS, IN THE AGGREGATE, 30.37 ACRES, MORE OR LESS, AND IS SUBJECT TO ANY EASEMENTS, PUBLIC OR PRIVATE, WHICH MAY EXIST THEREON.

FLOOD ZONE STATEMENT:

THE HEREON DESCRIBED AND PLATTED TRACT DOES NOT LIE IN ANY FLOOD HAZARD AREA ACCORDING TO THE FLOOD INSURANCE RATE MAP OF THE FEDERAL EMERGENCY MANAGEMENT AGENCY FOR THE CONWAY COUNTY, ARKANSAS. REFER TO COMMUNITY NUMBER 050426 B AT PANEL NUMBER 34. EFFECTIVE DATE OF SAID MAP: JUNE 3, 1986.

SURVEYOR'S NOTE:

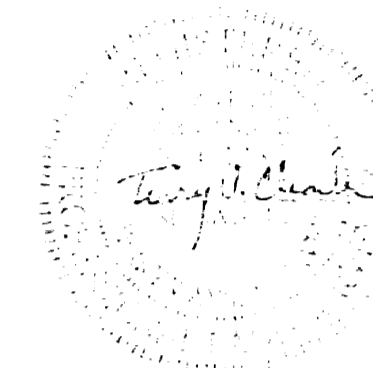
IN THE COURSE OF THIS SURVEY ADDITIONAL MEASUREMENTS MAY HAVE BEEN MADE BY THE SURVEYOR TO CONTROL THE LOCATION OF SET MONUMENTS AND THE ACCEPTANCE OR REJECTION OF FOUND MONUMENTS SHOWN ON THIS PLAT. INFORMATION ABOUT ANY SUCH MEASUREMENTS IS AVAILABLE TO APPROPRIATE CONCERNED PARTIES AND TO ANY REGISTERED PROFESSIONAL LAND SURVEYORS CONDUCTING BOUNDARY SURVEYS IN THIS AREA BY CONTACTING THE OFFICE OF LACHOWSKY-CLEAVER SURVEYING, INC.

THIS SURVEY IS BASED ON, AND CONFORMS WITH, LOCAL MONUMENTATION FOUND BY THE SURVEYOR IN THE FIELD.

SURVEYOR'S CERTIFICATION:

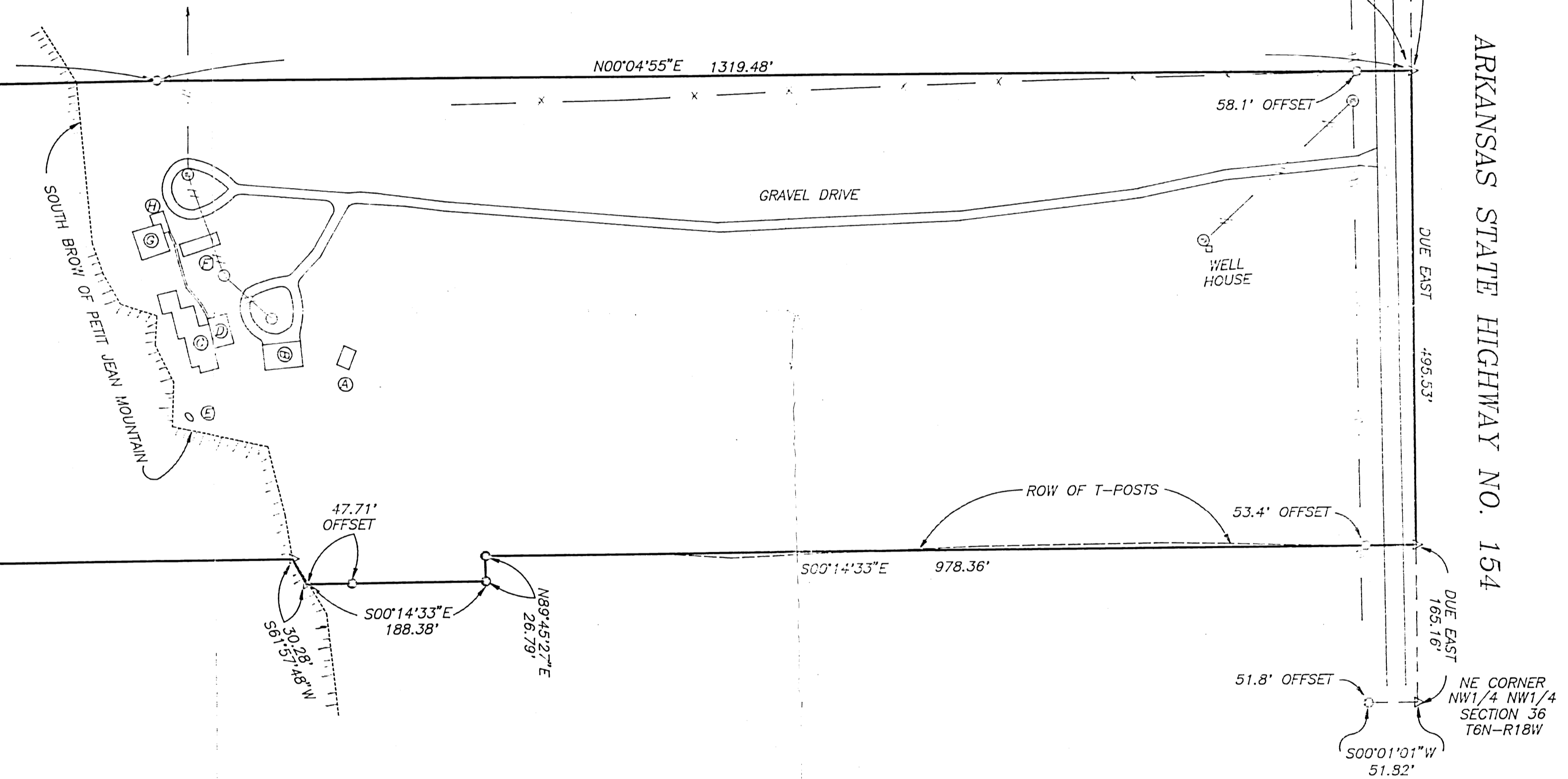
I HEREBY CERTIFY THAT THE HEREON PLATTED AND DESCRIBED SURVEY WAS COMPLETED UNDER MY SUPERVISION ON THE 10th DAY OF OCTOBER, 1998, AND THAT CORNERS WERE SET, AS SHOWN, TO THE BEST OF MY KNOWLEDGE AND ABILITY. THIS SURVEY IS FOR THE EXCLUSIVE USE OF THE PRESENT OWNERS OF THE PROPERTY AND ALSO THOSE WHO PURCHASE, MORTGAGE, OR GUARANTEE THE TITLE THERETO.

Terry W. Cleaver
TERRY W. CLEAVER, PLS 1336, ARKANSAS



2-1/2" ALUMINUM PIPE MONUMENT/CAP FOR THE NW CORNER SECTION 36 T6N-R18W SEE CERTIFIED LAND CORNER BOOK "A" @ PAGE 22

PART OF THE NW1/4 NW1/4 AND PART OF THE SW1/4 NW1/4 OF SECTION 36, T6N-R18W CONTAINS IN THE AGGREGATE 30.37 ACRES±



LEGEND

- | | |
|--|---|
| ⊙ METAL BUILDING (14' X 20') | ○ SET 3/8" REBAR W/CAP (OR AS NOTED) |
| ⊙ CONCRETE SLAB (40' X 26') | ⊠ EXISTING C.S.I. MONUMENT (AS NOTED) |
| ⊙ ONE STORY BLOCK & FRAME HOUSE (2322 SQUARE FEET) | ● FOUND MONUMENT 1/2" REBAR OR AS NOTED |
| ⊙ COVERED CARPORT (21.5' X 32') | △ COMPUTED POINT OR UNMONUMENTED CORNER |
| ⊙ SATELLITE DISH | ⊙ UTILITY POLE |
| ⊙ ONE STORY BLOCK, ROCK & FRAME BUILDING (14' X 32') | — — — UTILITY LINE |
| ⊙ ONE STORY ROCK & FRAME HOUSE (31' X 31') | —x—x— FENCE |
| ⊙ CONCRETE SLAB | |

ARKANSAS STATE HIGHWAY NO. 154

NE CORNER NW1/4 NW1/4 SECTION 36 T6N-R18W

LACHOWSKY-CLEAVER SURVEYING, Inc
36 KAUFMAN ROAD, HATTIEVILLE, AR, 72063
PHONE: (501) 354-0758

PLAT OF SURVEY FOR:
MICHAEL R. BRUCK and
NORMA D. BRUCK

DATE: 10/10/98	SCALE: 1 INCH=100 FEET	STATE CODE: 500-05N-18W-0-36-402-15-1336
JOB NO. 98-1979	DRAWN BY: TJC	